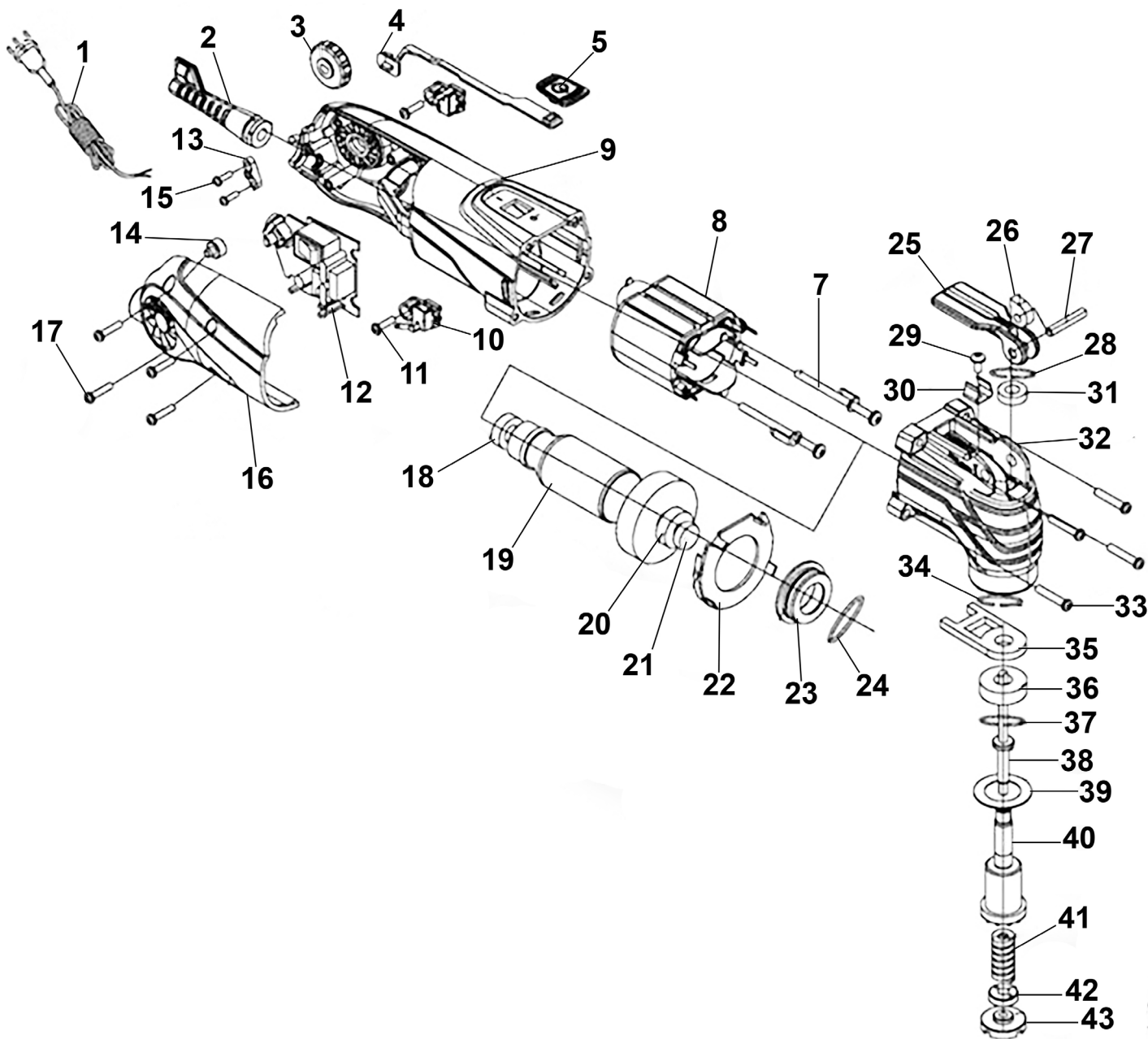


Parts Information: Variable Speed Quick Change Oscillating Multi-Tool 300W/230V Model No: SMT300Q



Item	Part No.	Description
1	SMT300Q.01	Cord
2	SMT300Q.02	Cord Sleeve
3	SMT300Q.03	Knob, Variable Speed, Red Plastic Ø27mm, 6mm Semicircular Chevron Female Fitting
4	SMT300Q.04	Slide Bar
5	SMT300Q.05	Red Button for Switch

Item	Part No.	Description
7	SMT300Q.07	Machine Screw
8	SMT300Q.08	Stator
9	SMT300Q.09	Housing
10	SMT300Q.10	Brush Holder Assembly
11	SMT300Q.11	Machine Screw

NOTE: It is our policy to continually improve products and as such we reserve the right to alter data, specifications and component parts without prior notice. There may be alternative versions of this product, please contact us should you require this information.

IMPORTANT: No liability is accepted for incorrect use of product. Spare parts must be fitted by a competent person

WARRANTY: Guarantee is 12 months from purchase date, proof of which will be required for any claim.



TM

Parts Information:
**Variable Speed Quick Change Oscillating
Multi-Tool 300W/230V
Model No: SMT300Q**

Item	Part No.	Description
12	SMT300Q.12	Circuit Board
13	SMT300Q.13	Cord Clamp
14	SMT300Q.14	Rubber Pin
15	SMT300Q.15	Machine Screw
16	SMT300Q.16	Top Cover
17	SMT300Q.17	Machine Screw
18	SMT300Q.18	Bearing
19	SMT300Q.19	Armature
20	SMT300Q.20	Bearing
21	SMT300Q.21	Bearing Bushing
22	SMT300Q.22	Baffle Ring
23	SMT300Q.23	Bearing Cover
24	AK453X.V3-P38	O-Ring (27.08 x 23.52 x 1.78mm)
25	SMT300Q.25	Locking Lever
26	SMT300Q.26	Locking Block
27	SMT300Q.27	Locking Pin
28	SMT300Q.28	Locking Ring
29	SMT300Q.29	Screw
30	SMT300Q.30	Bracket
31	SMT300Q.31	Bearing
32	SMT300Q.32	Gearcase

Item	Part No.	Description
33	SMT300Q.33	Machine Screw
34	AK4560D.101	Internal Circlip OD: 17.4mm
35	SMT300Q.35	Spindle Holder
36	SMT300Q.36	Bearing
37	SMT180.08	Internal Circlip OD: 27.8mm
38	SMT300Q.38	Central Pin
39	SMT300Q.39	Dust-Proof Ring
40	SMT300Q.40	Spindle
41	SMT300Q.41	Spring Ø12.3mm
42	SMT300Q.42	Spring Washer
43	SMT300Q.43	Plate
--	SMT300Q.44	Dust Extraction Tool (Not Shown)
--	CP20VMT.29	Backing Pad (Not Shown)
--	CP20VMT.28	Sanding Pads(Set of 4)(Not Shown)
		Accessories Available - Please See Catalogue
--	SMTA7	Multi-Tool 90mm Sanding Sheet Set 20pc
--	SMTA8	Multi-Tool Triangle Backing Pad 88mm
--	SMTB3	Multi-Tool Scraping Blade Set 3pc
--	SMTC3	Multi-Tool Universal Cutting Blade Set 3pc
--	SMTS7	Multi-Tool All-Purpose Blade Set 7pc

NOTE: It is our policy to continually improve products and as such we reserve the right to alter data, specifications and component parts without prior notice. There may be alternative versions of this product, please contact us should you require this information.

IMPORTANT: No liability is accepted for incorrect use of product. Spare parts must be fitted by a competent person

WARRANTY: Guarantee is 12 months from purchase date, proof of which will be required for any claim.

Sealey Group, Kempson Way, Suffolk Business Park, Bury St Edmunds, Suffolk. IP32 7AR



01284 757500



sales@sealey.co.uk



www.sealey.co.uk